



Nederman



Woodworking

Dust collection solutions
for woodworking industries

Take Control of your Factory Air

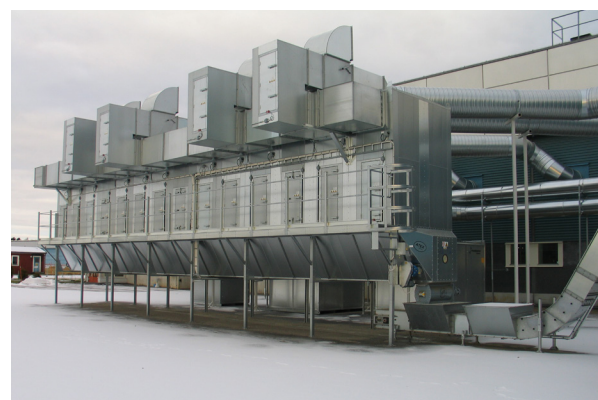
Dust generated by woodworking manufacturing processes create serious health and safety risks to workers and assets. Left uncontrolled, wood dust creates poor indoor air quality, accumulates on machinery causing accelerated wear and tear and creates combustible dust risks including fires and explosions. From small-to-large scale shops using hand tools to automated CNC machines, woodworking manufacturers need effective dust collection solutions to create a safe and productive work environment.

Processes common within woodworking factories including cutting, sanding, planing, edge banding, routing, drilling, create hazards such as poor indoor air quality, combustible dust risks and reduced productivity resulting from increased downtime.

In order to ensure a factory remains safe and productive, an effective and efficient approach to dust control needs to be taken. Upon being collected, reclaiming or recycling of the wood waste contributes to a more profitable and sustainable operation.

Nederman is The Clean Air Company and offers a complete line of dust collection equipment to support the woodworking industry. Our complete, turn-key solutions offer the following benefits:

- **Improved worker and facility safety**
- **Combustible dust compliance**
- **Energy efficient operation**
- **Flexibility for future expansion**
- **Healthier, cleaner environment**
- **Reduced machinery wear and tear**
- **Increased productivity and reduced downtime**
- **Improved product quality**



Nederman woodworking solutions

- **Complete Solutions.** Nederman specializes in each layer of the dust collection system: capturing the fume, conveying (duct design), collecting and filtering the dust and the controls.
- **Industry Expertise.** Assessing the initial requirements to managing the installation, Nederman can be a one-stop shop for wood dust control solutions.
- **Future Proof Technology.** Technology that is built for now and in the future to improve the operation and maintenance of wood dust control systems.

The global leader in clean air solutions for woodworking industry

As the world's leading provider of industrial air pollution control equipment, Nederman is your total solution provider for controlling woodworking dust. Whether the application is small or large, simple or complex, manual or automated, Nederman assesses each customers' unique needs and develops solutions that effectively and efficiently protect your workers and factory.

- **Industry Expertise.** Right solutions that ensure safety and efficient operation. With tens of thousands of successful installations, you can trust Nederman to get job done right.
- **Comprehensive Approach.** We manufacture the fans, duct, controls, safety devices and offer project, installation, commission and service support.
- **Solution Range.** A robust line-up of products and services that meet the unique needs of the woodworking industry.

- **Quality and Reliability.** Problems that result in lost production impact the bottom line. Nederman solutions are engineered with this in mind to keep you operational.
- **Global Presence.** Regional sales offices and network of distribution partners uniquely positions Nederman to support your local factory or global operations.
- **Sustainability.** A commitment to sustainable, clean air solutions that are energy efficient and reclaim waste material.

Combustible dust experts

Nederman is the global leader for ATEX and NFPA compliant dust collection solutions. Our comprehensive approach throughout the design, installation and maintenance processes sets us apart.

This approach begins with our sales and technical support teams who go through regular, rigorous training and follow a strict process to ensure the latest standards are being followed for each project. Next, we manufacture and select each component of the dust collection system including safety devices, so you can be confident you have a complete and compliant solution. Finally, Nederman offers both on-site and digital monitoring services to assist customers in the operation and maintenance of the system in a safe and compliant manner.

Did you know?

According to Dust Safety Science, the woodworking industry accounts for approximately 28% of all global, combustible dust incidents.



The Right Solution

Machinery, tools and processes vary widely across the wood working industry and a "one size fits all" approach to clean air is not always the best approach. Therefore, Nederman offers a complete range of industrial dust collection products and services for the controlling wood dust for machines and for general cleaning.

- Local Exhaust. Solutions for local, source control including CNC machines for single or multiple extraction points.
- On-Tool Source Capture. High-vacuum collectors for hand-held tools on single point or multiple extraction points.
- General Cleaning / Housekeeping. Over time, dust accumulates on floors and machine surfaces that require cleaning to reduce combustible dust risks and keep machines running smoothly.

Local Exhaust Collectors



Insight ready



LBR SmartFilter

LBR SmartFilters are reverse air baghouses configurable for various dust loadings and air volumes. The filter is energy efficient, IIoT ready and offers a wide range of options and accessories for unique needs.

- Configurable
- Future-proof
- Low operational cost
- Regulatory compliance
- Sustainable operation



S-Series

A simple, fast, quiet and effective solution for local dust control on a single machine. Installed indoors next to the machine. (when local legislation allows). Available in multiple sizes and configurations.

- Three or Single phase
- Easy installation
- Small footprint
- Quiet operation
- Dust discharged in bags, barrels or dumpbin

On-Tool (High-Vacuum) Collectors

FlexPAK

The FlexPAK is a high-vacuum dust collector with a compact design suitable for single or small number of extraction points or as central system. The PLC controlled system is IIoT ready and operates with a variable frequency drive for smooth and efficient operation.



Insight ready



FlexFilter

The FlexFilter is a central, high vacuum dust collector for multiple small machine and on-tool extraction points. With large capacity dust containers and automatic filter cleaning, these systems are suitable for high volume production environments.



Insight ready



General Cleaning/ Housekeeping

Industrial Vacuums

Mobile, high-vacuum solutions for general cleaning of floors, machining centers suitable for collecting combustible dust including wood.



Complete Solutions



Accessories

Exhaust Fans

Nederman's family of CombiFab Fans are a comprehensive family of blowers covering a wide range of applications and performance requirements to optimize the performance of your filter system. Available in multiple sizes, direct drive or belt-driven configurations and three types of fan wheels to meet unique operational needs.



Complete System Control Panels and Variable Frequency Drives

Comprehensive control panel featuring the Insight Control that is IIoT ready as standard. Our control panels are capable of operating the complete filtration system including external material handling, multiple fans, VFDs and more.



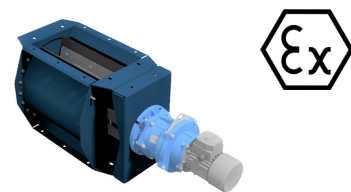
Combustible Dust Accessories

Complete line of combustible dust mitigation devices that protect the factory from explosion hazards originating in the filter. Complies with latest ATEX and NFPA standards.



Rotary Valves

Robust and reliable rotary valves (air lock) that transfer material from dust collector to dust container or material transport system. Complies with ATEX and NFPA standards.



Nordfab QF Industrial Duct

Complete range of Nordfab Quick-Fit (QF) durable duct and fittings for building a complete extraction system. Compared to traditional ducting systems, the QF style duct offers installation savings, adapting to existing systems, improved cleaning and future flexibility.



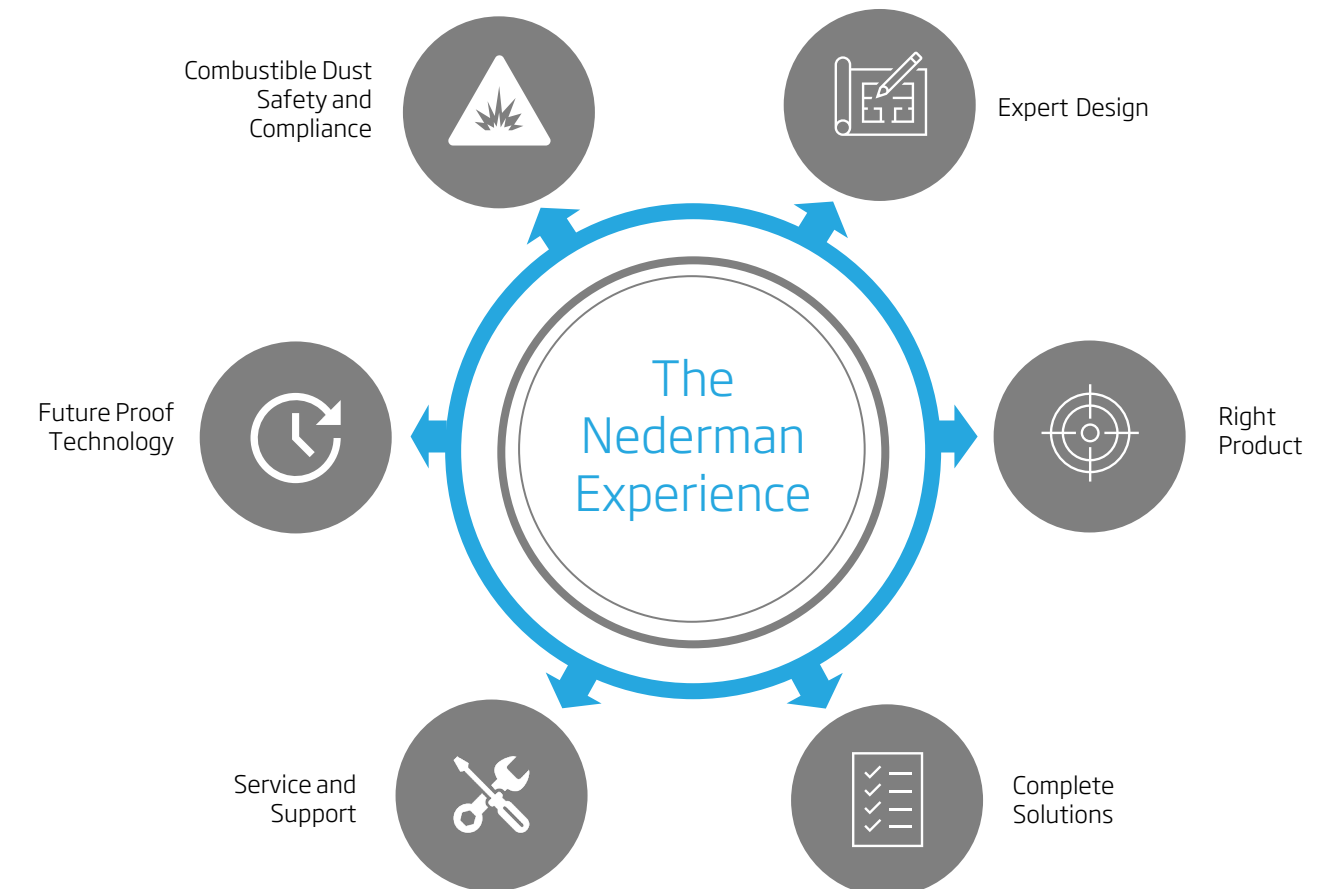
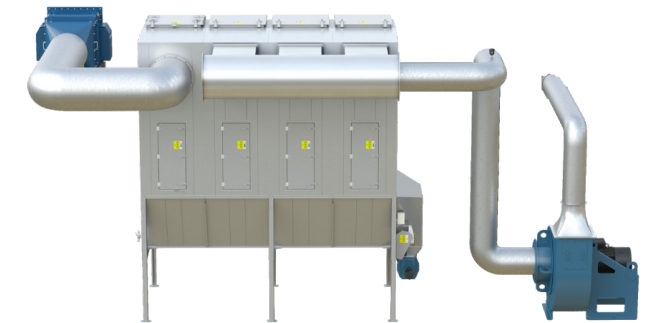
Particulate Emission Monitors

Monitoring emissions offers benefits including air quality measurement, leak detection, regulatory reporting and combustible dust compliance. Nederman offers a family of Auburn FilterSense high-precision monitors that help ensure your filter is operating just as expected.



The Clean Air Company

Nederman offers a comprehensive approach to clean air solutions for the woodworking industry. We consider ourselves a partner in our customers operation and are committed to helping them achieve a productive, profitable and sustainable future. Therefore, we provide complete, turn-key solutions beginning with the system design and continuing through the operation and service resulting in an effective, safe and efficient dust collection system.



Experience & Competence You Can Trust

Over 75 years of experience developing products and solutions to reduce environmental strain and protect people from the harmful effects of indoor air pollution.



"When selecting Nederman as a partner the goal was to acquire a dust collection system which is known to be very reliable while finding the best ratio between price and performance, capable to be easily expanded in the future and (operated) separately for different production departments."

**ALVIC Group USA
Woodworking Factory**



Worldwide presence

Nederman has a strong global presence in both sales and production - with sales and distributor companies in over 30 countries and production performed in 12 countries on five continents. In many countries, we also have a well established service organization. By offering advanced service with high availability, Nederman helps customers to secure continuous, optimized production. We have extensive experience creating safe work environments, handling combustible dusts, managing turn-key projects and servicing dust collectors. Our innovative, smart solutions including Insight have further strengthened our ability to deliver clean air to our customers throughout the world.



"Marine Furniture is pleased with the cooperation with Nederman. Nederman has shown great professionalism from the moment of creating the offer, preparing documentation until the completion of the investment. The dust collector installation meets our expectations 100%!!"

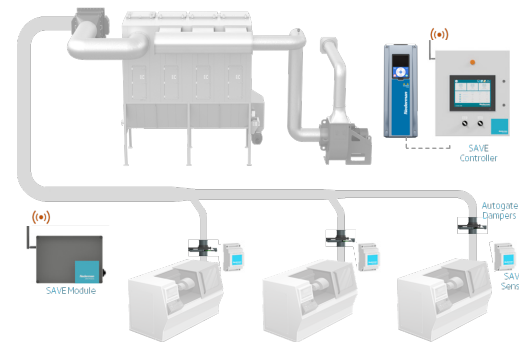
**LBR Installation
Woodworking factory in Poland**



Shaping the Future of Clean Air

Nederman SAVE

Nederman SAVE enhances the performance of new or existing wood dust collection systems. By utilizing machine and process information, SAVE automatically adjusts damper settings to regulate airflow, ensuring proper dust extraction and safe material transport. This process minimizes energy consumption, improves combustible dust safety, expands operational capacity, and reduces maintenance time, making it a valuable addition to any wood dust collection system.



Energy and process monitoring

Energy, process data collected with Nederman SAVE can be monitored and visualized through Nederman Insight allowing users to track machine utilization, process parameters and energy savings.



Energy reduction

Achieve up to 70% savings through improved airflow control. Reduced load on HVAC systems also yields additional savings.

Production and maintenance data

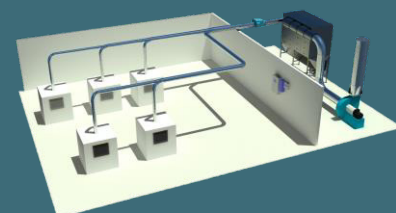
SAVE technology monitors machine activity to optimize airflow allowing it to capture productivity information on each connected machine.

Quieter operation

Less exhaust air means lower fan speeds and less filter cleaning reducing the noise level in the factory and in the dust collector operation. Reduced load on HVAC systems also yields additional savings.

Nederman ProQuote

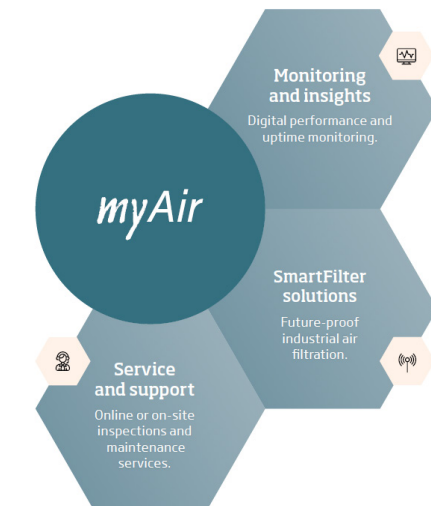
Nederman utilizes ProQuote, a state-of-the-art design tool, to quickly prepare accurate solutions that meet specifications, are energy efficient, and compliant with local regulations. The tool's 3D visualization feature helps manufacturers gain a clear understanding of the installation process, operation, and maintenance of the system, which in turn helps keep the project within budget.



Nederman *myAir*

Prioritizing service or maintenance of their dust collection systems may be difficult, but impact these systems have on operations is important. Personal and asset safety, energy consumption, worker productivity, and sustainability are all impacted by how effective and efficient the filtration operates. To help wood industry manufacturers manage these systems, Nederman has developed the myAir platform.

The myAir scalable service offering includes SmartFilter solutions, traditional on-site inspection and maintenance services and connected, digital monitoring service called Nederman Insight. This comprehensive platform allows Nederman to craft a service offering catered to manufacturer's unique needs, helping our customers achieve more efficient approaches to health and safety, productivity, compliance and energy efficiency.



Benefits of active monitoring and proper service

Safety. Wood dust presents a risks to workers and facilities from dust exposure, noise, and combustible dust hazards.

Productivity. Downtime for high-production wood facilities is expensive, especially for central dust collection systems that may protect multiple machines.

Maintenance. Most facilities lack expertise in operating dust collection equipment and optimizing performance.

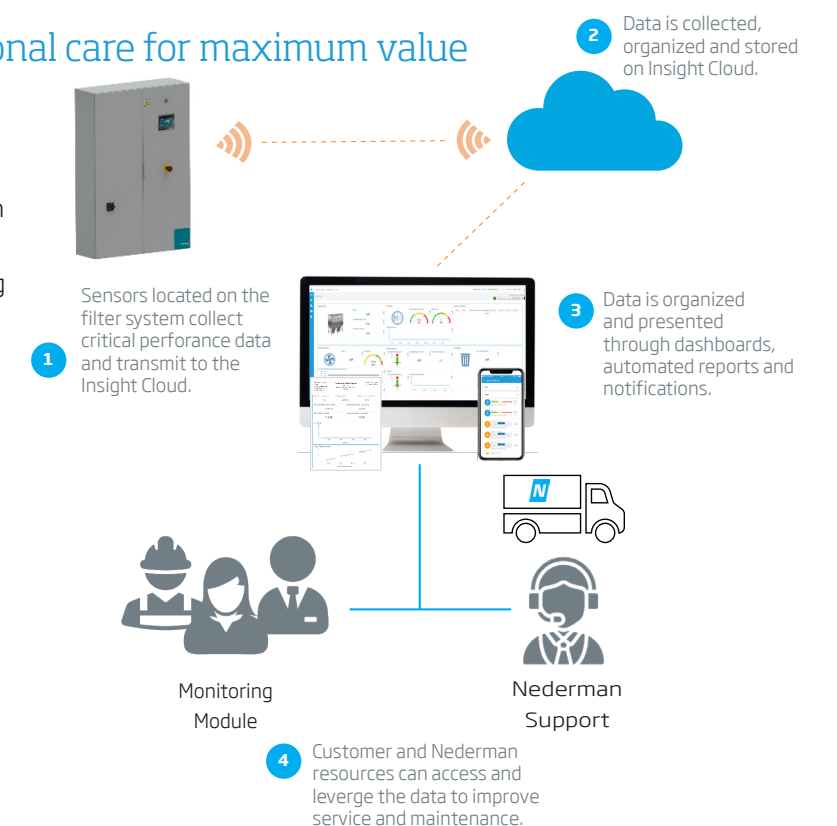
Reduced Emissions. Poorly maintained filtration systems increase emissions and pressure drop, reducing component life.

Energy Efficiency. Optimally designed and operated filtration systems can reduce energy consumption and costs, improving sustainability.

Future-proof technology with traditional care for maximum value

Nederman believes in providing maximum value to its customers, and that's why we combine the precision of digital monitoring with the care of traditional services. With our Nederman Insight service, customers can remotely monitor their dust collection systems in real-time, receiving alerts about any issues that require attention. Our service team can then use this information to provide proactive, on-site maintenance and repair services, ensuring optimal system performance and minimizing downtime.

Nederman Insight also provides valuable data analytics and reports, helping customers optimize their systems and improve their overall operations. By combining digital precision with traditional care, we can offer our customers the best of both worlds and maximize their value.





Nederman

The Clean Air Company

Our promise - contributing to a sustainable future

Clean air is a cornerstone of sustainable production. Our customers want to boost profitability by making their operations as efficient as possible. They want to meet high environmental standards and keep employees safe from fumes and dust. Nederman can help them on all counts. That's how we create value.

The Clean Air Company - Vision 2025

Nederman celebrated its 75th anniversary in 2019. From the very beginning, the business idea was clean air. Today, the environment and sustainability are more relevant than ever and the demands are increasing to contribute actively to more efficient production and reduced emissions in industry. The next generation of solutions for clean industrial airflows is under development. Nederman is at the forefront of this development.